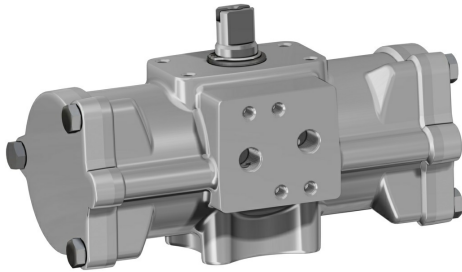


失蜡法CF8M不锈钢材质GD型 双效气动执行器

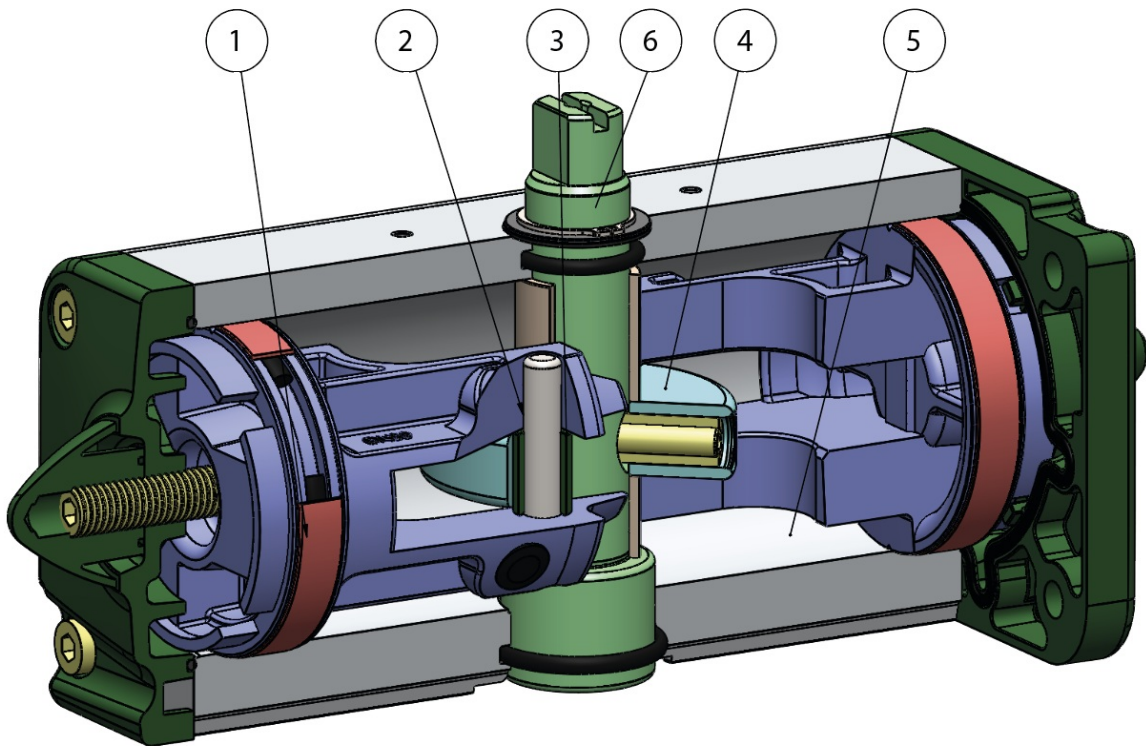


宏 气动执行器

小类 CF8M不锈钢精密铸造执行器

执行器标定扭矩：15 Nm~480 Nm

优点



1.自润滑的密封滑动轴承

降低活塞与缸筒之间的摩擦力；
即便长期停用，亦可避免密封件与缸筒发生粘连。

2.缸筒、套管和传动轴的硬度超过50 HRC

更强的执行器内部抗力

3.缸筒和活塞之间的滚动摩擦

更小的摩擦力

4.滚动摩擦的十字滑块(通过活塞和无传动装置的轴，将线性运动转换为旋转运动)。

活塞和传动轴之间的摩擦力更小，从而减少零部件磨损

打开和关闭时有着更强的起动力矩

相较于齿轮和齿条式执行器，其尺寸更小，安装空间需求更低

相较于齿轮和齿条式执行器，其重量更小(-30% Kg/Nm)，建造基础设施时可降低成本

相较于齿轮和齿条式执行器，其耗气量更低，(双效：-40% 空气 cm³/Nm；单效：-20% 空气 cm³/Nm)，能够有效降低压缩机的工作负荷，或直接使用小尺寸压缩机。

5.滑动缸筒

得益于较低的表面粗糙度，可以降低轴承的磨损。

6.Stainless steel shaft

Higher corrosion resistance

自GD15型号起接埠NAMUR电磁阀的接口

无需安装额外基座

在ACTUATECH自有设施内完成全部生产流程

对加工各个阶段的最佳管控

ATEX认证

可安装于潜在易爆的环境内

最高达SIL3等级的认证

更高的运行安全等级

特性

技术参数

扭矩介于15Nm~480Nm之间

法兰接口标准：ISO 5211；F03 - F05 - F07 - F10

符合EN 15714-3标准

旋转角度：92°(-1°，+91°)

起动扭矩：与供应压力成正比；具体请参见 GD 气动执行器的综合产品目录

标准型GD执行器的代码中包含5.6Bar时的起动扭矩 (Nm)。

自 GD 60 尺寸起，可以直接将NAMUR电磁阀安装在执行器上

GD15-GD30型号强制配备NAMUR接口

ATEX认证型号符合欧盟《2014/34/UE》

运行条件

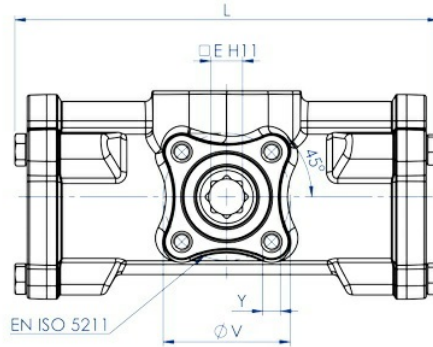
温度：-20°C~+80°C

额定压力：5.6bar；最高作业压力：8.4bar

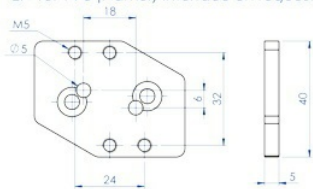
流体源：无需润滑且经过滤的压缩空气。需要润滑时，请使用与NBR材质相兼容的油料。

特性

GD15 ÷ GD30

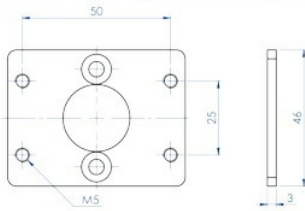


Interfaccia EN 15714-3 (Namur) a richiesta
 EN 15714-3 (Namur) interface on request

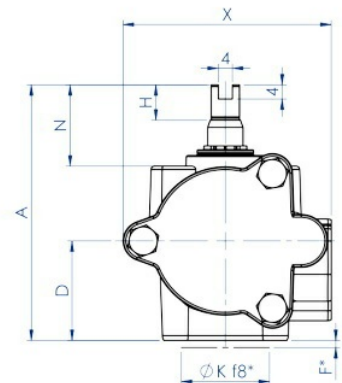
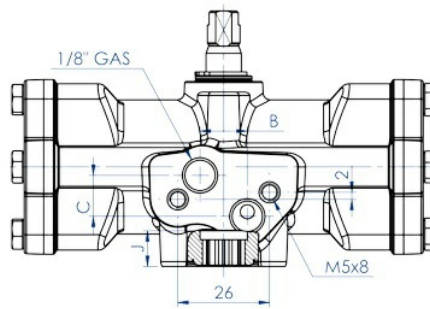


Optional Code KBNI4015

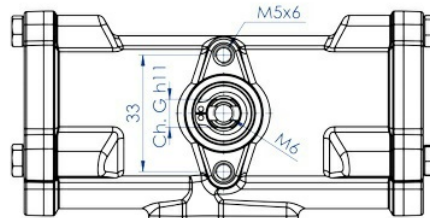
Interfaccia EN 15714-3 (Namur) a richiesta
 EN 15714-3 (Namur) interface on request



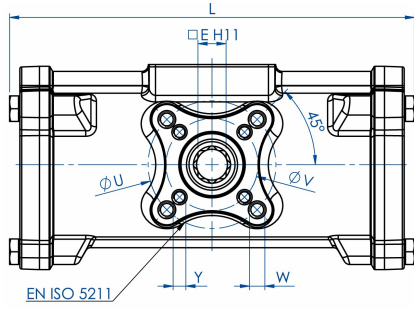
Optional Code KBVI4015



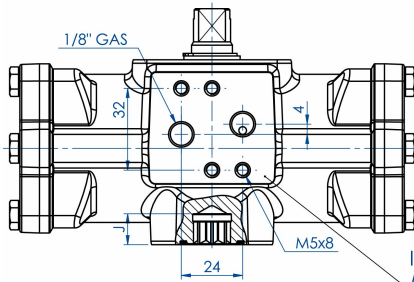
*Anello di centraggio
 Centering ring



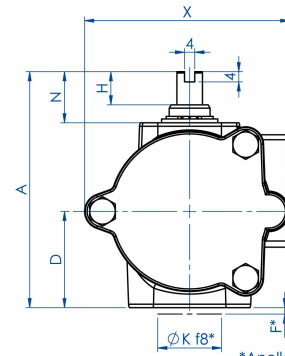
GD60 ÷ GD480



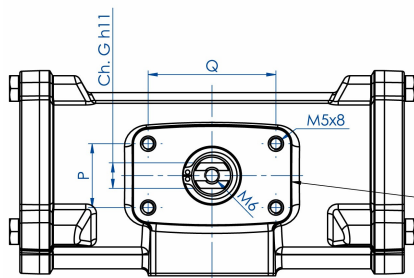
EN ISO 5211



Interfaccia EN 15714-3 (Namur)
 EN 15714-3 (Namur) interface



*Anello di centraggio
 Centering ring

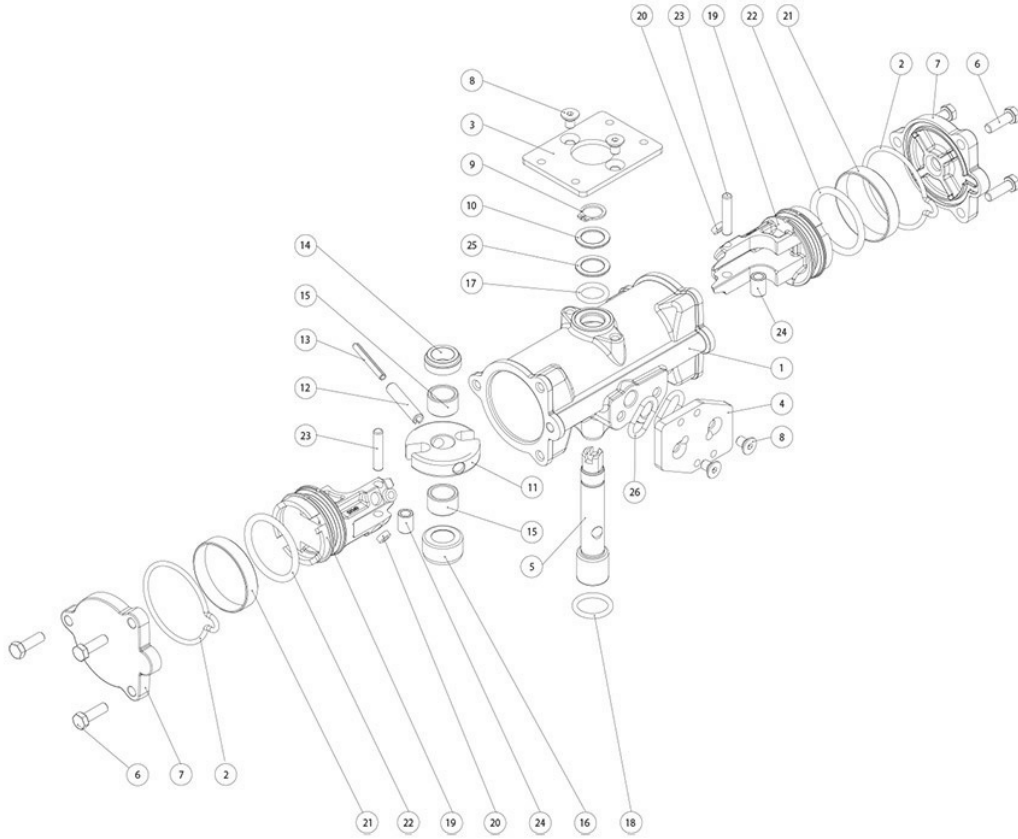


Interfaccia per accessori
 EN 15714-3 (VDI/VDE 3845)
 Accessories interface
 EN 15714-3 (VDI/VDE 3845)

技术参数表						
密封备件	KGGS112	KGGS114	KGGS116	KGGS118	KGGS120	KGGS122
尺寸	GD 15 F03	GD 30 F03	GD 60 F03-F05	GD 120 F05-F07	GD 240 F05-F07	GD 480 F07-F10
L mm.	120	134,6	158,4	192,9	246,8	298,4
A mm.	72,4	80,4	92,5	116,5	136,4	160
B mm.	13,4	11,6	-	-	-	-
C mm.	12	13	-	-	-	-
D mm.	28,2	32,7	37,7	46,2	56,2	68
E mm.	9	9	11	14	17	22
F mm.	2	2	2	3	3	3
Ch. G mm.	8	9	10	12	15	19
H mm.	10	10	13	13	17	19
N mm.	23	23	20	30	30	30
X mm.	59	68	80,3	94,4	117	139,7
J mm.	10,2	10,2	12,2	16,3	19,3	24,3
ØK mm.	25	25	25	35	35	55
Q mm.	50	50	50	80	80	80
P mm.	25	25	25	30	30	30
ØU mm.	-	-	50	70	70	102
ØV mm.	36	36	36	50	50	70
Y x prof. depth mm.	M5x9	M5x9	M5x9	M6x11	M6x11	M8x13
W x prof. depth mm.	-	-	M6x11	M8x15	M8x13	M10x22
供气量 dm ³ /cycle	0,08	0,16	0,30	0,61	1,26	2,46
重量 Kg.	0,8	1,2	1,8	3,3	5,6	9,5

物料

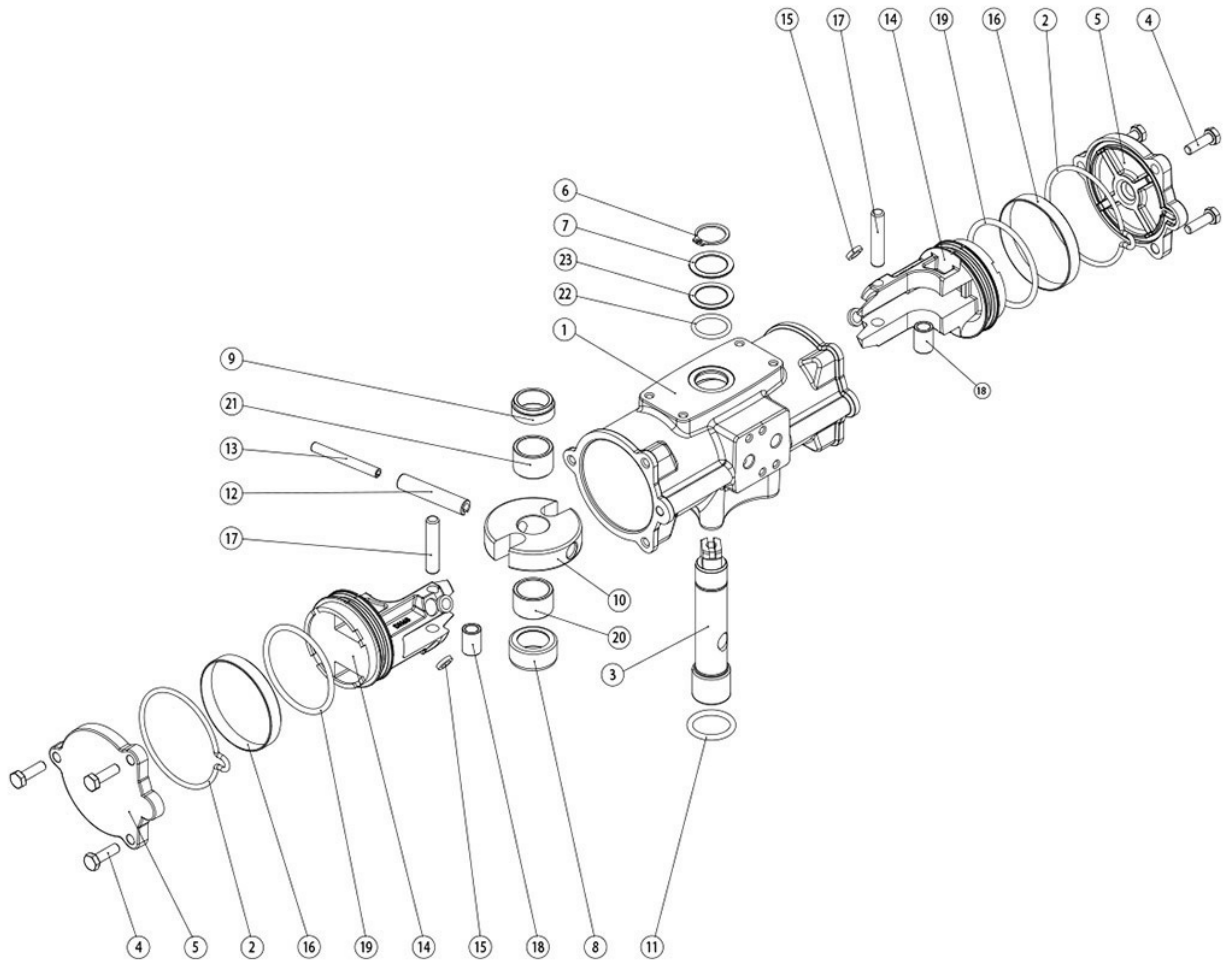
"GD"双效精密铸造CF8M不锈钢气动执行器的组件 - 尺寸 : GD15-GD30



材质: GD 15 ÷ GD 30			
位置	名称	数量	材质
1	缸筒	1	不锈钢
2*	封盖O形圈	2	NBR
3	VDI/VDE 基座	1	不锈钢
4	NAMUR 基座	1	不锈钢
5	阀轴	1	不锈钢
6	螺栓	6	不锈钢
7	封盖	2	不锈钢
8	螺栓	4	不锈钢
9	Seeger 弹性圈	1	不锈钢
10	垫圈	1	不锈钢
11	十字滑块	1	合金钢
12	十字滑块塑料外杆	1	合金钢
13	十字滑块塑料内杆	1	合金钢
14	上轴支架	1	乙缩醛树脂
15	支承衬套	2	乙缩醛树脂
16	下轴支承件	1	乙缩醛树脂
17*	轴上O形圈	1	FKM
18*	轴下O形圈	1	FKM
19	活塞	2	合金钢
20*	活塞支架	4	P.T.F.E. carbo-graphite filled
21*	密封环	2	聚氨酯
22*	活塞O形圈	2	NBR
23	传动轴o	2	合金钢
24	衬套	2	合金钢
25*	止推轴承	1	乙缩醛树脂
26	O形圈(选装)	2	NBR

* 备件套装的组件

"GD"双效精密铸造CF8M不锈钢气动执行器的组件 - 尺寸 : GD60-GD480

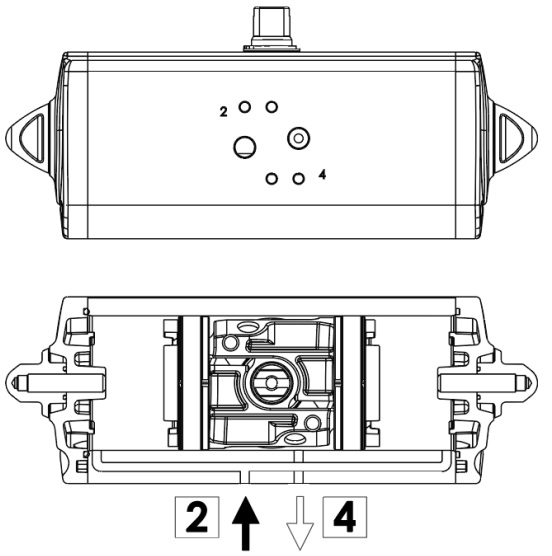


材质			
位置	名称	数量	材质
1	缸筒	1	不锈钢
2*	封盖O形圈	2	NBR
3	阀轴	1	不锈钢
4	螺栓	6	不锈钢
5	封盖	2	不锈钢
6	Seeger 弹性圈	1	不锈钢
7	垫圈	1	不锈钢
8	下轴支承件	1	乙缩醛树脂
9	上轴支架	1	乙缩醛树脂
10	十字滑块	1	不锈钢
11*	轴下O形圈	1	FKM
12	十字滑块塑料外杆	1	不锈钢
13	十字滑块塑料内杆	1	不锈钢
14	活塞	2	不锈钢
15*	活塞支架	4	P.T.F.E. carbo-graphite filled
16*	密封环	2	聚氨酯
17	传动轴	2	不锈钢
18	衬套	2	不锈钢
19*	活塞O形圈	2	NBR
20	下支承衬套	1	乙缩醛树脂
21	上支承衬套	1	乙缩醛树脂
22*	轴上O形圈	1	FKM
23*	止推轴承	1	乙缩醛树脂

* 备件套装的组件

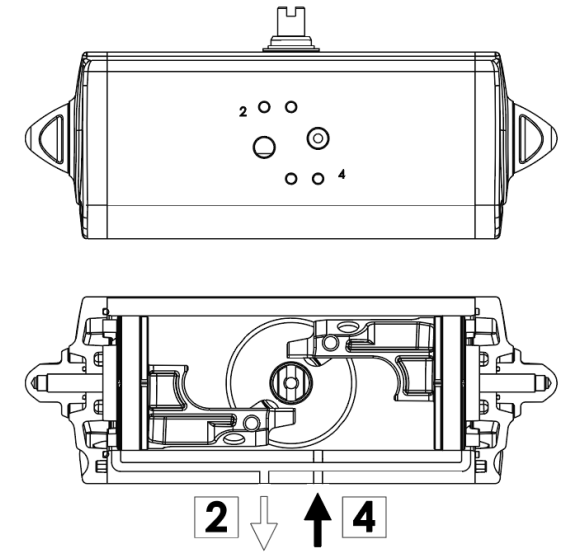
规格

气动执行机构"GD"的操作图



SCHEMA DI FUNZIONAMENTO
 Immettendo aria nel foro 2 di alimentazione, i pistoni si muovono verso il centro e si ha una rotazione antioraria, la posizione finale è quella rappresentata nel disegno.

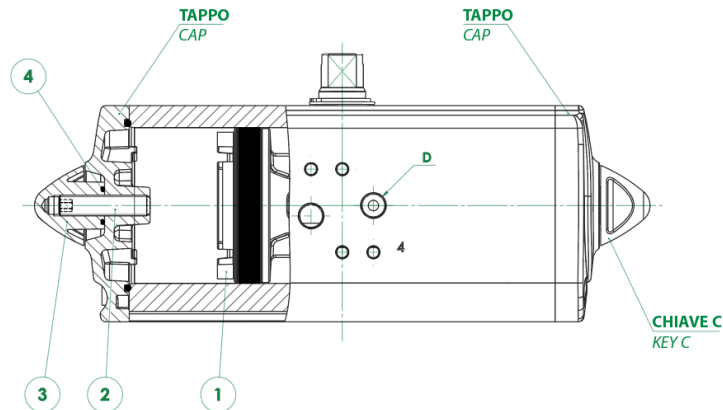
WORKING PLANE
 Supplying air through the air connection 2, the pistons move towards the center in an anticlockwise direction. The above drawing shows the final position.



SCHEMA DI FUNZIONAMENTO
 Immettendo aria nel foro 4 di alimentazione, i pistoni si muovono verso l'esterno e si ha una rotazione oraria, la posizione finale è quella rappresentata nel disegno.

WORKING PLANE
 Supplying air through the air connection 4, the pistons move outwards in a clockwise direction. The above drawing shows the final position.

ATTUATORE REGOLABILE-ISTRUZIONI PER L' UTILIZZO ACTUATOR WITH STROKE ADJUSTMENT-INSTRUCTIONS

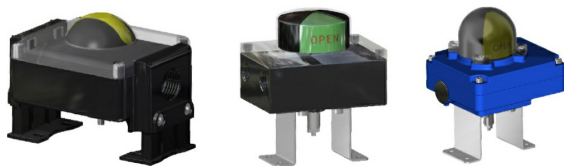


- A) Immettere aria nel foro "D" in modo che i pistoni (part. n°1) si vengano a trovare in posizione di finecorsa verso i tappi.
 - B) Togliere il controdado (part. n°3) agendo sulla chiave C.
 - C) Togliere l'aria di alimentazione.
 - D) Con una chiave a brugola agire sulle viti (part. n°2) ed effettuare la limitazione di corsa desiderata.
 - N.B. La corsa può essere limitata per un massimo di 10° da 80° a 90°. Altre regolazioni disponibili a richiesta.
 - E) Mettere aria nel foro "D", verificare che entrambe le viti (part. n°2) siano a battuta contro i pistoni.
 - F) Mettere il controdado (part. n°3) munito di O-ring (part. n°4) per la tenuta tra dado e tappo.
- N.B. queste spiegazioni sono indicative, per le istruzioni operative, vedere il manuale.

- A) Supply air through the air connection D so that the pistons (Part. 1) move to the end-stroke position, towards the caps.
 - B) Remove the counter nut (part. 3) acting on the C key.
 - C) Shut off the air supply.
 - D) Adjust the end stroke as desired, acting on the screws (part 2) with an hexagonal key.
 - Note: maximum adjusting stroke 10°, ranging from 80° to 90°. Other regulations on request.
 - E) Supply air through the air connection D and check that both screws stop the pistons.
 - F) Screw the counter-nut (part 3) and its o-ring (part 4) to keep nut and cap tight.
- N.B. these explanations are indicative, for operating instructions, see the manual.

附件

配备限位器的信号盒



手动解锁操纵器



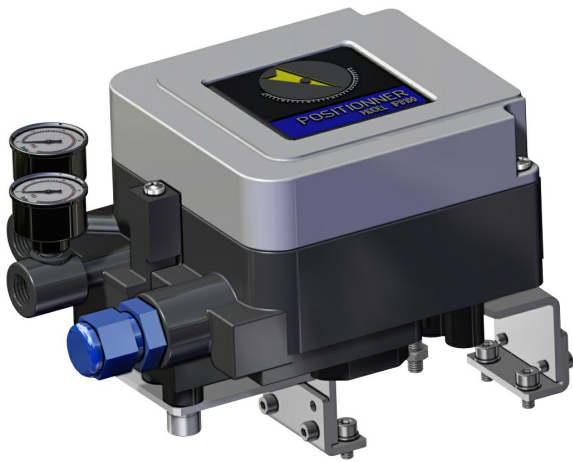
NAMUR 电磁阀



电磁阀



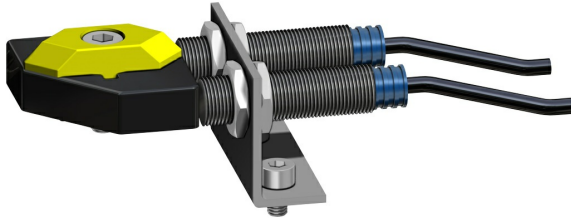
电气定位器 (内置安全装置)



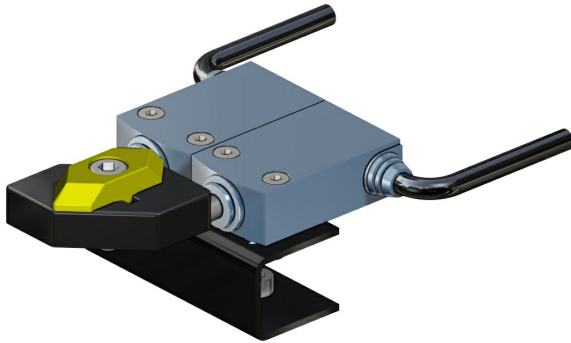
气动定位器



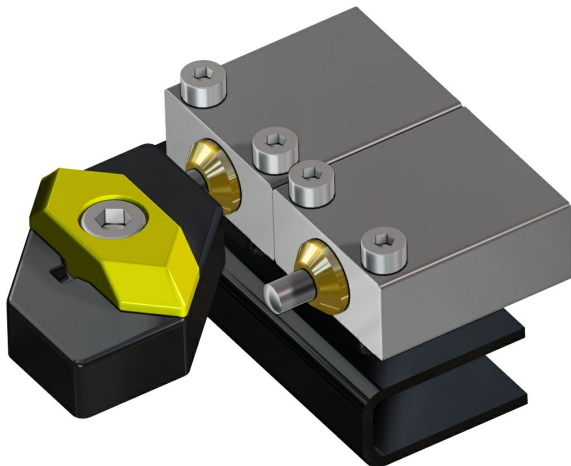
接近式限位器



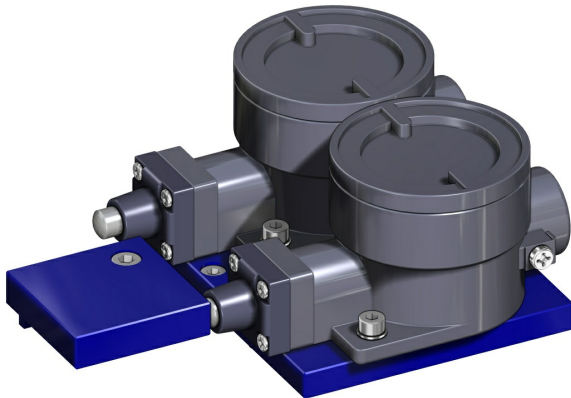
机电式限位器



气动式限位器



抗爆燃限位器II2GD ExdIIC



有关详情请查阅ACTUATECH附件产品目录。

文档

目录

ATTUATORI INOX

证明书

AKNOWLEDGEMENT OF RECEIPT - EC - ATEX

SIL CERTIFICATE GD

数据表

GD0120F05F07INOX

GD0030F03INOX

GD0480F07F10INOX

GD0015F03INOX_OPT

GD0060F03F05INOX

GD0240F05F07INOX

GD0015F03INOX

GD0030F03INOX_OPT