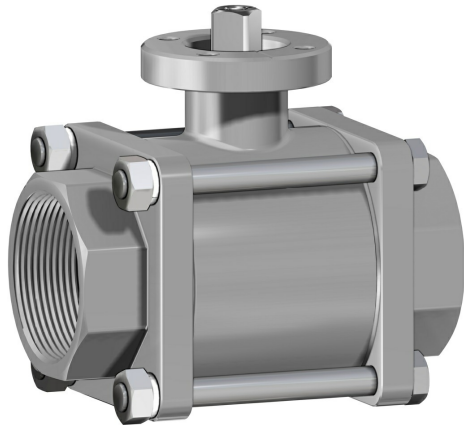


Warning: count(): Parameter must be an array or an object that implements Countable in /var/www/vhost/www.omal.it/htdocs/classes/Prodotto.php on line 390

Warning: count(): Parameter must be an array or an object that implements Countable in /var/www/vhost/www.omal.it/htdocs/classes/Prodotto.php on line 405

Item 420 stainless steel ball valves



Macro [Ball valves](#)

Category [Other stainless steel ball valves](#)

2-way full-bore three piece stainless steel ball valve, threaded-ends or butt weld

features

GENERAL FEATURES:

- The valve is manufactured in 316L stainless steel.
- Manufactured in three pieces to facilitate replacement on plants which requires frequent maintenance.
- Threaded ends as per ISO 7/1 specifications; socket welding; butt welding.
- Working temperature: from -20°C to +150°C
- Working pressure: see diagram.
- Fluid range: air, water, gas, petroleum and petrochemical products, aggressive media.
- ISO 5211 flange connection.
- **The manual version (with lever) doesn't have the ISO 5211 flange connection and its therefore not possible to mount on it any kind of actuators.**

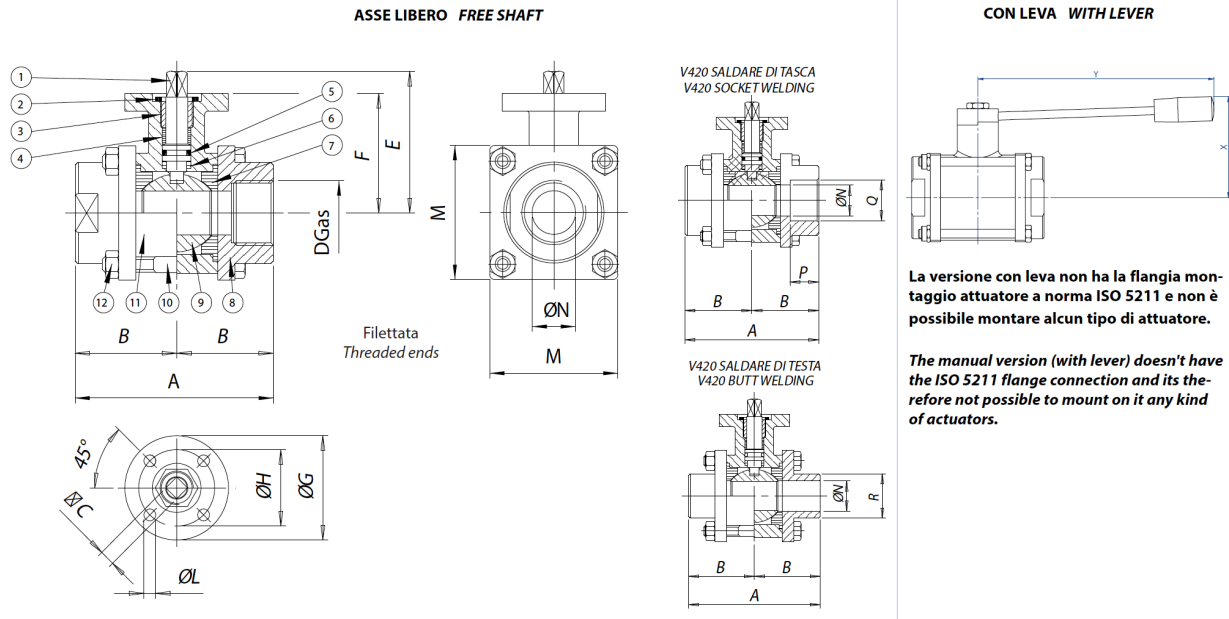
ON REQUEST:

- Threaded: NPT
- Seals made of: PTFE glass filled / PTFE with carbon graphite
- For other applications, please contact our sales department.

CERTIFICATIONS:

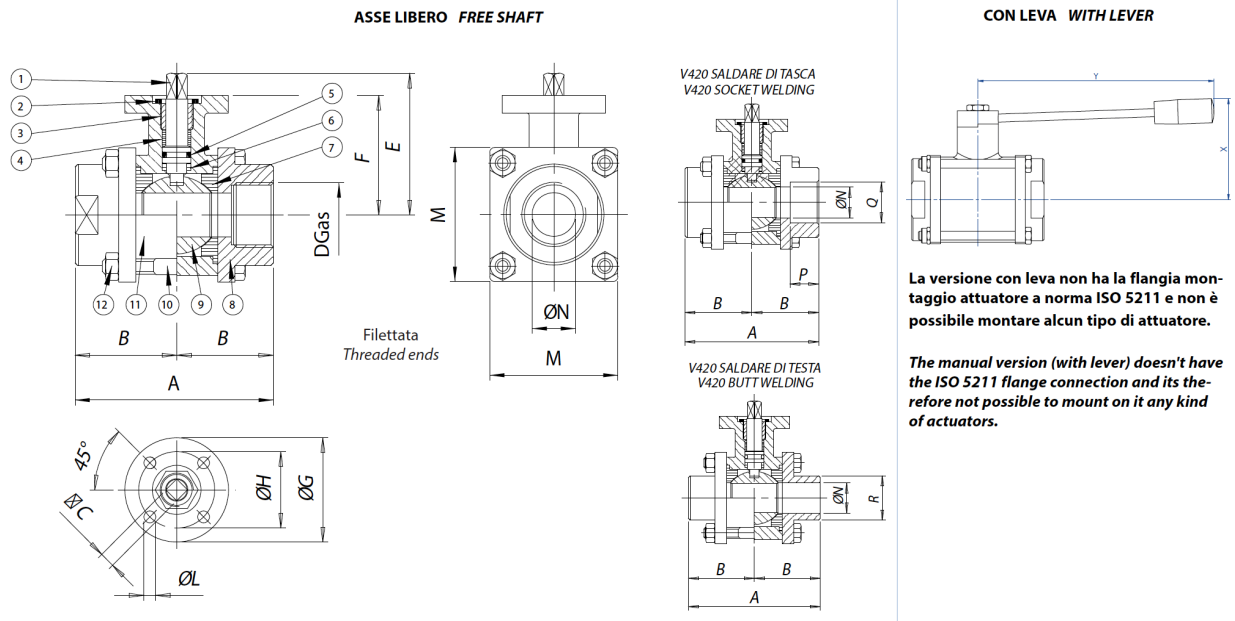
- ATEX version in conformity with directive 2014/34/EU on request.
- ATEX certificate on request.

dimensions



SIZE		DIMENSIONS															
		A	B	□C	D	E	F	∅G	∅H	∅L	□M	∅N	Q	P	R	X	Y
DN [mm]	[inch]																
DN 10	3/8"	70	35	6	3/8"	49,5	41,5	46	36	6	40	10	17,8	9,7	18	55	110
DN 15	1/2"	70	35	6	1/2"	49,5	41,5	46	36	6	40	15	22	9,7	22,5	55	110
DN 20	3/4"	80	40	6	3/4"	53	45	46	36	6	45	20	27,3	12,7	28	60	110
DN 25	1"	90	45	9	1"	64,5	51,5	65	50	7	60	25	42,8	12,7	34,5	70	160
DN 32	1" 1/4	100	50	9	1" 1/4	69,5	56,5	65	50	7	70	32	42,8	12,7	43,5	80	160
DN 40	1" 1/2	114	57	14	1" 1/2	89	76	65	50	7	80	40	48,9	12,7	49,5	95	190
DN 50	2"	136	68	14	2"	95	82	65	50	7	90	50	61,4	15,8	61,5	100	190

materials

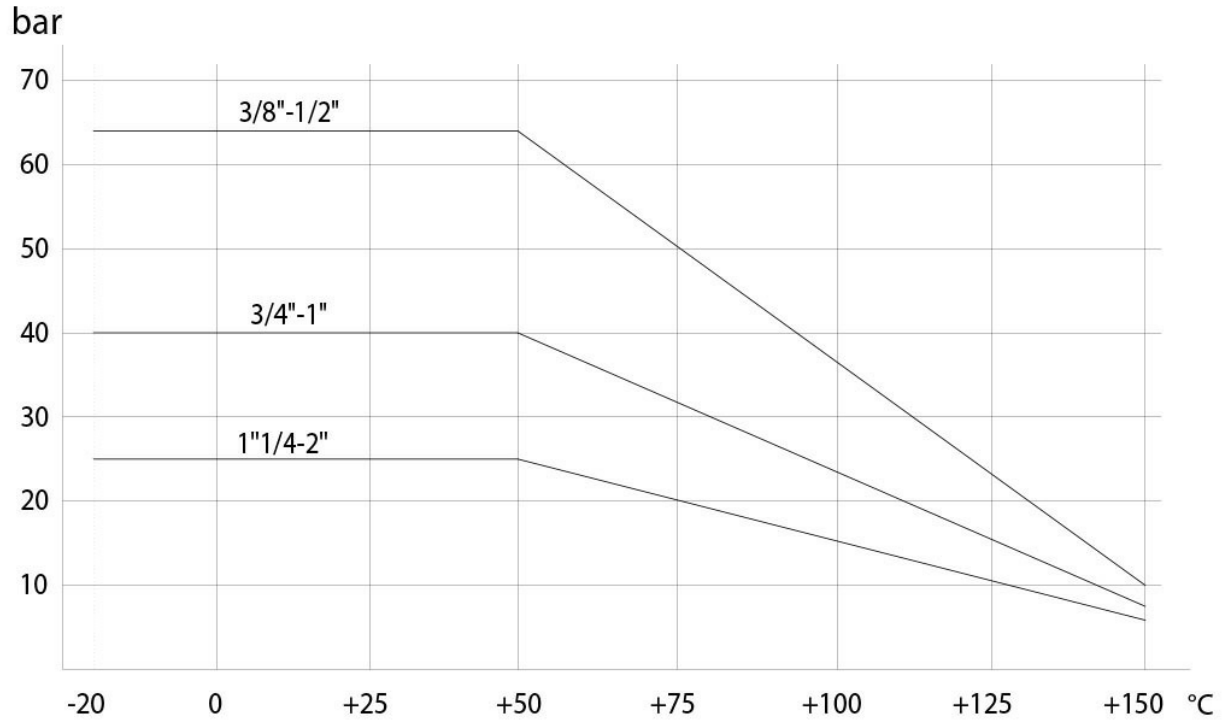


MATERIALS

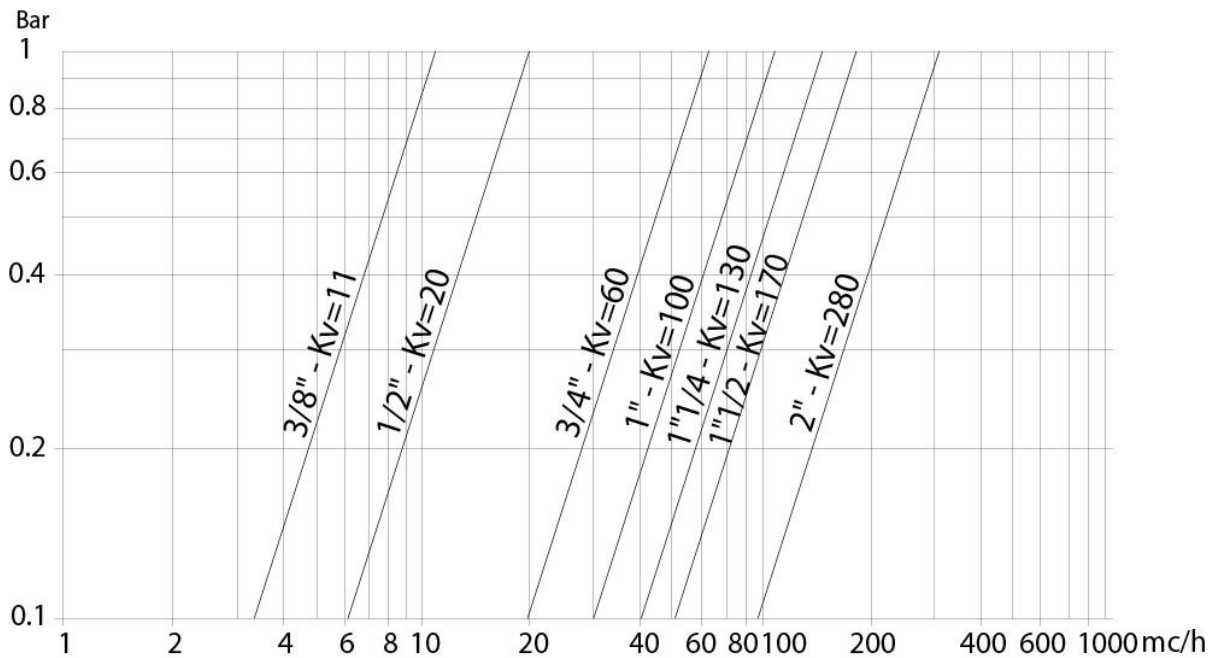
1	Shaft	316L S.S.	1.4401	UNI X2CrNiMo 17 12
2	Nut	303 S.S.		
3	Ring nut	304L S.S. (303 S.S.)		
4*	Shaft seal	P.T.F.E.		
5*	Shaft o-ring	FKM		
6*	Shaft seal	P.T.F.E.		
7*	Ball seal	P.T.F.E.		
8	Flange	316L S.S.	1.4401	UNI X2CrNiMo 17 12
9	Ball	316L S.S.	1.4401	UNI X2CrNiMo 17 12
10	Screws	303 S.S.		
11	Body	316L S.S.	1.4401	UNI X2CrNiMo 17 12
12	Nut	303 S.S.		
* Components of spare part kit KGBV55...				

diagrams and breakaway torque

Pressure/temperature diagram



Flow/pressure loss diagram and Kv nominal coefficient



Kv is the coefficient, expressed in m³/h (with water at 15°C) causing a pressure loss of 1 bar.

BREAKAWAY TORQUES Nm

SIZE	DN 10 3/8"	DN 15 1/2"	DN 20 3/4"	DN 25 1"	DN 32 1 1/4"	DN 40 1 1/2"	DN 50 2"
PN 25 bar					20	29	40
PN 40 bar			10	14			
PN 63 bar	7	8					

Torque can vary depending on temperature and type of fluid; a safety factor of 1.4 must be applied. Torque can drop on high frequency of operations. The actuator/valve sizing, indicated on the following pages, are based for valves to be used with liquids or gaseous fluids, clean, and for medium temperatures. For further information, or different uses please contact our sales department.